

A1. Wiring Ducts

A2. Cable Ties

A3. Din Rails

A4. Cable Markers

A5. Cable Clamps

A6. Wrapping Bands

A7. Nylon Cable Gland

A8. Metal Cable Gland

A9. Plastic Flexible Conduit

A10. Metal Flexible Conduit

A11. Terminal

A12. Copper Tube Terminals

A13. Heat Shrinkable Tubings

A14. Bus Bar Insulators

A15. Tool

A16. Cable Clip

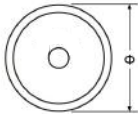
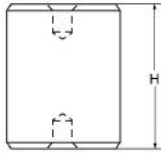
A17. Insulating Nut

A18. Nylon Cable Carrier

CE RoHS EASCO® Bus Bar Insulators MNS Series (MNS型绝缘子)



Materials: BMC (Bough Moulding Compound) SMC (Sheet Moulding Compound).
 Insert Material: Brass, Iron.
 Working Temperature: -40°C ~ +140°C
 Remark: Special color, insert, material is upon request by client with reasonable quantities.
 材质: 不饱和聚酯树脂玻璃纤维增强模压塑料(BMC)(SMC).
 嵌件: 黄铜、铁
 工作温度: -40°C~+140°C
 备注: 颜色、嵌件、材料性能可依客户需求定制, 但有起订量要求。



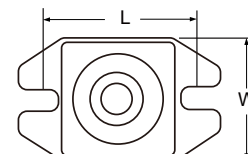
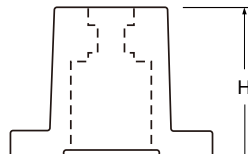
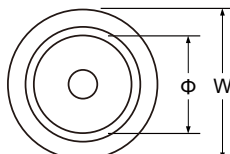
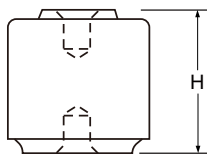
Article No.	Part No.	Φ	H	Torgue Strength (FT LBS)	Screw	Material	Color
货号	型号			扭矩 (FT LBS)	螺纹	材料	颜色
A0114.006.0001	MNS16xH.D.	Φ16	20,25,30,35,40	M6	8	BMC	Red 红色
A0114.006.0002	MNS25xH.D.	Φ25	25,30,40,50	M6	9	BMC	
A0114.006.0003	MNS30xH.D.	Φ30	30,40,50,60	M8	9	BMC	
A0114.006.0004	MNS40xH.D.	Φ40	40,50,60,70,80	M8,M10	12	BMC	
A0114.006.0005	MNS50xH.D.	Φ50	50,60,70,80	M8,M10	15	BMC	
A0114.006.0006	MNS60xH.D.	Φ60	40,50,60	M10,M12	15	BMC	
A0114.006.0007	MNS70xH.D.	Φ70	70,80,90,100,110	M14,M16	18,22	BMC	

CE RoHS EASCO® Bus Bar Insulators ID Series (ID型绝缘子)



Materials: BMC (Bough Moulding Compound) SMC (Sheet Moulding Compound).
 Insert Material: Brass, Iron.
 Working Temperature: -40°C ~ +140°C
 Remark: Special color, insert, material is upon request by client with reasonable quantities.
 材质: 不饱和聚酯树脂玻璃纤维增强模压塑料(BMC)(SMC).
 嵌件: 黄铜、铁
 工作温度: -40°C~+140°C
 备注: 颜色、嵌件、材料性能可依客户需求定制, 但有起订量要求。

Article No.	Part No.	Tensile Strength (LBS)	Anti-Proof (KV)	Torgue Strength (FT LBS)	Screw	Screw Depth	H	L	Φ	W	Material	Color
货号	型号	伸缩强度 (LBS)	耐压 (KV)	扭矩 (FT LBS)	螺纹	螺纹深度					材料	颜色
A0114.007.0001	Φ30x30	500	5	8	6	10	30		18	30	BMC	Black 黑色
A0114.007.0002	Φ30x40	500	6	10	6	12	40		18	30	BMC	
A0114.007.0003	Φ40x40	650	10	12	8	13	40		26	40	BMC	
A0114.007.0004	Φ30x60	650	15	40	10	15	60		26	40	BMC	
A0114.007.0005	Φ50x40	1000	10	50	10	13	40		31.5	50	BMC	
A0114.007.0006	CJ50	500	8	20	10		50	50		40	BMC	



Φ30x30, Φ30x40, Φ40x40, Φ30x60, Φ50x40

CJ50