

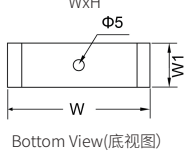
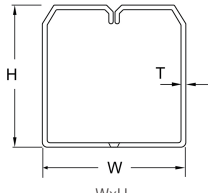
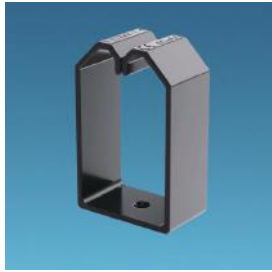
## EASCO® LS Type Retainer (LS型线槽专用夹线套)

Materials:ABS.

Feature:

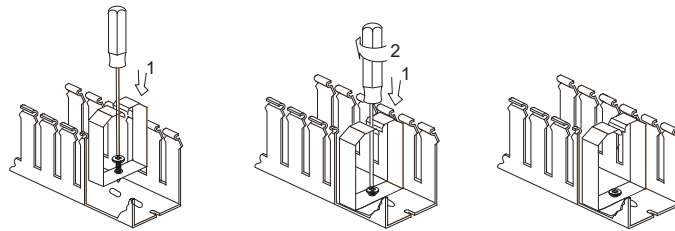
- Wire Retainers For holding wires during wiring operations, these retainers are essential.
- They allow easy access to the interior of the wire duct during maintenance or alterations.
- While assuring that wiring bundles will not fall out when the duct cover is removed.

Color: Black.



Bottom View(底视图)

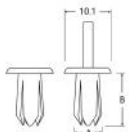
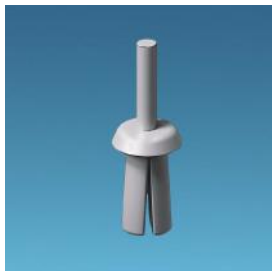
| Article No.    | Part No. | Suitable Wire duct Size WxH | W   | H  | T   | W1 | Color     |
|----------------|----------|-----------------------------|-----|----|-----|----|-----------|
| 货号             | 型号       | 对应线槽规格 WxH                  |     |    |     |    | 颜色        |
| A0101.032.0001 | LS4040   | 40x40                       | 35  | 36 | 2.0 | 20 | Black(黑色) |
| A0101.032.0002 | LS6040   | 60x40                       | 55  | 35 | 2.0 | 20 | Black(黑色) |
| A0101.032.0003 | LS4060   | 40x60                       | 35  | 56 | 2.0 | 20 | Black(黑色) |
| A0101.032.0004 | LS6060   | 60x60                       | 54  | 55 | 2.0 | 20 | Black(黑色) |
| A0101.032.0005 | LS8060   | 80x60                       | 74  | 55 | 2.0 | 20 | Black(黑色) |
| A0101.032.0006 | LS10060  | 100x60                      | 94  | 55 | 2.0 | 20 | Black(黑色) |
| A0101.032.0007 | LS12060  | 120x60                      | 114 | 54 | 2.0 | 20 | Black(黑色) |
| A0101.032.0008 | LS4080   | 40x80                       | 34  | 75 | 2.0 | 20 | Black(黑色) |
| A0101.032.0009 | LS6080   | 60x80                       | 54  | 75 | 2.0 | 20 | Black(黑色) |
| A0101.032.0010 | LS8080   | 80x80                       | 74  | 74 | 2.0 | 20 | Black(黑色) |
| A0101.032.0011 | LS10080  | 100x80                      | 94  | 75 | 2.0 | 20 | Black(黑色) |
| A0101.032.0012 | LS12080  | 120x80                      | 113 | 74 | 2.0 | 20 | Black(黑色) |
| A0101.032.0013 | LS60100  | 60x100                      | 54  | 95 | 2.0 | 20 | Black(黑色) |
| A0101.032.0014 | LS80100  | 80x100                      | 74  | 94 | 2.0 | 20 | Black(黑色) |
| A0101.032.0015 | LS100100 | 100x100                     | 93  | 94 | 2.0 | 20 | Black(黑色) |
| A0101.032.0016 | LS150100 | 150x100                     | 143 | 94 | 2.0 | 20 | Black(黑色) |



## EASCO® R Type Rivet (Use With Wiring Duct) (R型配线槽专用尼龙铆钉)

Materials:Nylon.

Structure: secure the wiring duct with the nylon rivet through the mounting holes on duct base.



Rivet(铆钉示意图)

| Article No.    | Part No. | Rivet Hole (A) | Rivet Length (B) | Base Thickness (T) | Color     | Pkg Qty (pcs) |
|----------------|----------|----------------|------------------|--------------------|-----------|---------------|
| 货号             | 型号       | 铆钉孔径 (A)       | 铆钉长度 (B)         | 基板厚度范围             | 颜色        | 包装数 (个)       |
| A0101.024.0001 | R5       | 5              | 10               | 7.0~10.0           | Black(黑色) | 500           |
| A0101.024.0002 | R6       | 6.2            | 11               | 7.0~12.0           | Black(黑色) | 500           |

