

A1. Wiring Ducts

A2. Cable Ties

A3. Din Rails

A4. Cable Markers

A5. Cable Clamps

A6. Wrapping Bands

A7. Nylon Cable Gland

A8. Metal Cable Gland

A9. Plastic Flexible Conduit

A10. Metal Flexible Conduit

A11. Terminal

A12. Copper Tube Terminals

A13. Heat Shrinkable Tubings

A14. Bus Bar Insulators

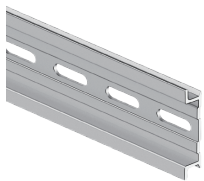
A15. Tool

A16. Cable Clip

A17. Insulating Nut

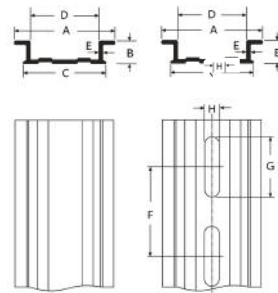
A18. Nylon Cable Carrier

## CE RoHS EASCO® Omega2BL Aluminum Din Rail (Omega2BL铝制导轨)



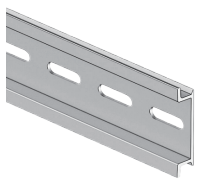
Materials(材质): Aluminum(铝制).  
color(颜色): Silver.(银灰色)  
Size(尺寸):35x7.5mm  
Features(产品特征):

- The guide rail makes the installation of electrical equipment significantly faster and easier than installing individual components on the cabinet body.(导轨使电气设备的安装比在机柜主体上安装单个组件明显更快、更容易。)
- The guide rail helps save space in electrical panels and junction boxes by reducing the number of required installation hardware.(导轨通过减少所需的安装硬件数量来帮助节省电气面板和接线盒中的空间。)
- The guide rail provides a universal standard that most circuit breakers, PLCs, and wiring terminals are designed to meet.  
(导轨提供了一个通用标准,大多数断路器、PLC和接线端子的设计都符合该标准。)
- The rails allow for easy installation and uninstallation of components.  
It is also much easier to make minor adjustments to the position of the guide rail installation components.  
(导轨允许轻松安装和卸载组件。对导轨安装组件的位置进行细微调整也容易得多。)
- Guides help simplify wiring design by providing centralized locations through which wiring and connectors can pass.  
(导轨通过提供布线和连接器可以穿过的集中位置来帮助简化布线设计。)



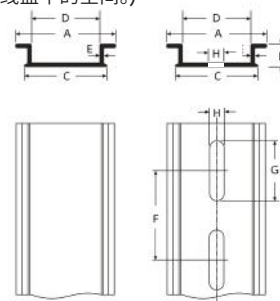
Article No.	Part No.	Stud Size	Dimension( 尺寸 )								Length (pcs)	Pkg Qty (pcs)
			A	B	C	D	E	F	G	H		
货号	型号	产品特征	A	B	C	D	E	F	G	H	长度 (根)	包装数 (根)
A0103.006.0001	OMEGA2B	Thick Nonporous 35x7.5mm 35x7.5mm 无孔	35	7.5	30.7	26	1.1				1m,2m	30
A0103.006.0002	OMEGA2BL	Thickened Hole 35x7.5mm 35x7.5mm 有孔	35	7.5	30.7	26	1.1	50	25	5.2	1m,2m	30

## CE RoHS EASCO® Omega2CL Aluminum Din Rail (Omega2CL铝制导轨)



Materials(材质): Aluminum(铝制).  
color(颜色): Silver.(银灰色)  
Size(尺寸):35x7.5mm  
Features(产品特征):

- The guide rail makes the installation of electrical equipment significantly faster and easier than installing individual components on the cabinet body.(导轨使电气设备的安装比在机柜主体上安装单个组件明显更快、更容易。)
- The guide rail helps save space in electrical panels and junction boxes by reducing the number of required installation hardware.(导轨通过减少所需的安装硬件数量来帮助节省电气面板和接线盒中的空间。)
- The guide rail provides a universal standard that most circuit breakers, PLCs, and wiring terminals are designed to meet.  
(导轨提供了一个通用标准,大多数断路器、PLC和接线端子的设计都符合该标准。)
- The rails allow for easy installation and uninstallation of components.  
It is also much easier to make minor adjustments to the position of the guide rail installation components.  
(导轨允许轻松安装和卸载组件。对导轨安装组件的位置进行细微调整也容易得多。)
- Guides help simplify wiring design by providing centralized locations through which wiring and connectors can pass.  
(导轨通过提供布线和连接器可以穿过的集中位置来帮助简化布线设计。)



Article No.	Part No.	Stud Size	Dimension( 尺寸 )								Length (pcs)	Pkg Qty (pcs)
			A	B	C	D	E	F	G	H		
货号	型号	产品特征	A	B	C	D	E	F	G	H	长度 (根)	包装数 (根)
A0103.005.0001	OMEGA2C	Thick Nonporous 35x7.5mm 35x7.5mm 无孔	35	7.5	30.7	26	1.5				1m,2m	30
A0103.005.0002	OMEGA2CL	Thickened Hole 35x7.5mm 35x7.5mm 有孔	35	7.5	30.7	26	1.5	10	25	5.2	1m,2m	30