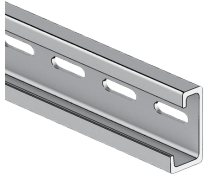
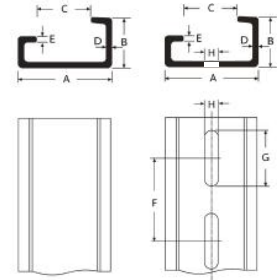


CE RoHS EASCO® G1 Aluminum Din Rail (G1S型铝制导轨)



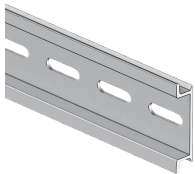
Materials(材质): Aluminum(铝制).
 color(颜色): Silver.(银灰色)
 Size(尺寸):32x15mm
 Features(产品特征):

- The guide rail makes the installation of electrical equipment significantly faster and easier than installing individual components on the cabinet body.(导轨使电气设备的安装比在机柜主体上安装单个组件明显更快、更容易。)
- The guide rail helps save space in electrical panels and junction boxes by reducing the number of required installation hardware.(导轨通过减少所需的安装硬件数量来帮助节省电气面板和接线盒中的空间。)
- The guide rail provides a universal standard that most circuit breakers, PLCs, and wiring terminals are designed to meet.
 (导轨提供了一个通用标准,大多数断路器、PLC和接线端子的设计都符合该标准。)
- The rails allow for easy installation and uninstallation of components.
 It is also much easier to make minor adjustments to the position of the guide rail installation components.
 (导轨允许轻松安装和卸载组件。对导轨安装组件的位置进行细微调整也容易得多。)
- Guides help simplify wiring design by providing centralized locations through which wiring and connectors can pass.
 (导轨通过提供布线和连接器可以穿过的集中位置来帮助简化布线设计。)



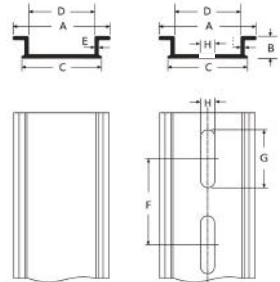
Article No.	Part No.	Stud Size	Dimension(尺寸)								Length (pcs)	Pkg Qty (pcs)
			A	B	C	D	E	F	G	H		
货号	型号	产品特征	A	B	C	D	E	F	G	H	长度 (根)	包装数 (根)
A0103.004.0001	G1S	Thick Nonporous 32x15mm 32x15mm 无孔	32	15	16.5	1.5	1.5				1m,2m	30
A0103.004.0002	G1SL	Thickened Hole 32x15mm 32x15mm 有孔	32	15	16.5	1.5	1.5	25	15	6.2	1m,2m	30

CE RoHS EASCO® Omega2AL Aluminum Din Rail (Omega2AL铝制导轨)



Materials(材质): Aluminum(铝制).
 color(颜色): Silver.(银灰色)
 Size(尺寸):35x7.5mm
 Features(产品特征):

- The guide rail makes the installation of electrical equipment significantly faster and easier than installing individual components on the cabinet body.(导轨使电气设备的安装比在机柜主体上安装单个组件明显更快、更容易。)
- The guide rail helps save space in electrical panels and junction boxes by reducing the number of required installation hardware.(导轨通过减少所需的安装硬件数量来帮助节省电气面板和接线盒中的空间。)
- The guide rail provides a universal standard that most circuit breakers, PLCs, and wiring terminals are designed to meet.
 (导轨提供了一个通用标准,大多数断路器、PLC和接线端子的设计都符合该标准。)
- The rails allow for easy installation and uninstallation of components.
 It is also much easier to make minor adjustments to the position of the guide rail installation components.
 (导轨允许轻松安装和卸载组件。对导轨安装组件的位置进行细微调整也容易得多。)
- Guides help simplify wiring design by providing centralized locations through which wiring and connectors can pass.
 (导轨通过提供布线和连接器可以穿过的集中位置来帮助简化布线设计。)



Article No.	Part No.	Stud Size	Dimension(尺寸)								Length (pcs)	Pkg Qty (pcs)
			A	B	C	D	E	F	G	H		
货号	型号	产品特征	A	B	C	D	E	F	G	H	长度 (根)	包装数 (根)
A0103.005.0001	OMEGA2A	Thick Nonporous 35x7.5mm 35x7.5mm 无孔	35	7.5	30.7	26	1.1				1m,2m	30
A0103.005.0002	OMEGA2AL	Thickened Hole 35x7.5mm 35x7.5mm 有孔	35	7.5	30.7	26	1.1	50	25	5.2	1m,2m	30

- A1. Wiring Ducts
- A2. Cable Ties
- A3. Din Rails
- A4. Cable Markers
- A5. Cable Clamps
- A6. Wrapping Bands
- A7. Nylon Cable Gland
- A8. Metal Cable Gland
- A9. Plastic Flexible Conduit
- A10. Metal Flexible Conduit
- A11. Terminal
- A12. Copper Tube Terminals
- A13. Heat Shrinkable Tubings
- A14. Bus Bar Insulators
- A15. Tool
- A16. Cable Clip
- A17. Insulating Nut
- A18. Nylon Cable Carrier