

☺ EASCO® GR Type Wiring Ducts With Additional Holes (GR型多孔环保配线槽)

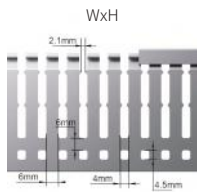
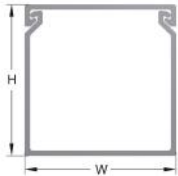
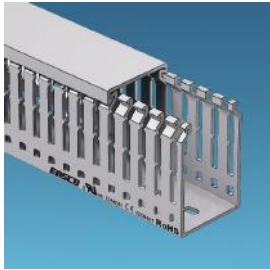
Materials: Lead-Free PVC.

Feature:

- Flame-retardant, self-extinguishing according to UL94-V0.
- They offer good insulation properties and are resistant to chemicals, making them suitable for a wide range of applications.
- Operating Temperature: -5°C to 60°C.
- Complies with RoHS regulations, Complies with IEC 60695-2-1 and EN 50085-2-3 standards.

Standard Length: 2 meters

Color: White(RAL9003), Gray(RAL7042), Black, Blue(RAL5017). Other colors are also available.



Narrow Slot (SR)
出线孔示意图

- G = Gray
- W = White
- B = Black
- BL = Blue

Article No.	Part No.	Wd. (W)	Ht. (H)	Slot Narrow (SR)	Porous Size	Pkg Qty (pcs)
货号	型号	宽度 (W)	高度 (H)	窄齿 (SR)	多孔尺寸	包装数 (根)
A0101.035.0001	GR2560	25	60	SR	4x4.5	42
A0101.035.0002	GR3060	30	60	SR	4x4.5	60
A0101.035.0003	GR3560	35	60	SR	4x4.5	50
A0101.035.0004	GR4060	40	60	SR	4x4.5	42
A0101.035.0005	GR4560	45	60	SR	4x4.5	42
A0101.035.0006	GR5060	50	60	SR	4x4.5	36
A0101.035.0007	GR5560	55	60	SR	4x4.5	36
A0101.035.0008	GR6060	60	60	SR	4x4.5	30
A0101.035.0009	GR8060	80	60	SR	4x4.5	22
A0101.035.0010	GR10060	100	60	SR	4x4.5	18
A0101.035.0011	GR2580	25	80	SR	4x4.5	32
A0101.035.0012	GR3080	30	80	SR	4x4.5	40
A0101.035.0013	GR3580	35	80	SR	4x4.5	36
A0101.035.0014	GR4080	40	80	SR	4x4.5	32
A0101.035.0015	GR4580	45	80	SR	4x4.5	28
A0101.035.0016	GR5080	50	80	SR	4x4.5	24
A0101.035.0017	GR5580	55	80	SR	4x4.5	24
A0101.035.0018	GR6080	60	80	SR	4x4.5	20
A0101.035.0019	GR8080	80	80	SR	4x4.5	16
A0101.035.0020	GR10080	100	80	SR	4x4.5	12
A0101.035.0021	GR12080	120	80	SR	4x4.5	10
A0101.035.0022	GR14080	140	80	SR	4x4.5	8
A0101.035.0023	GR25100	25	100	SR	4x4.5	50
A0101.035.0024	GR33100	33	100	SR	4x4.5	36
A0101.035.0025	GR40100	40	100	SR	4x4.5	28
A0101.035.0026	GR48100	48	100	SR	4x4.5	24
A0101.035.0027	GR50100	50	100	SR	4x4.5	24
A0101.035.0028	GR60100	60	100	SR	4x4.5	20
A0101.035.0029	GR70100	70	100	SR	4x4.5	16
A0101.035.0030	GR75100	75	100	SR	4x4.5	16
A0101.035.0031	GR80100	80	100	SR	4x4.5	16
A0101.035.0032	GR100100	100	100	SR	4x4.5	12
A0101.035.0033	GR120100	120	100	SR	4x4.5	8
A0101.035.0034	GR160100	160	100	SR	4x4.5	8

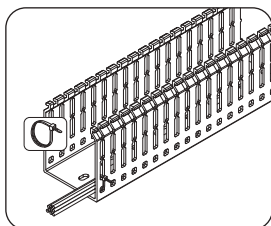
*The product is sold as a set of base and cover, No need to order another cover.

*本产品槽底槽盖整套出售, 无需额外订购盖板。

*Catalog number must be completed by adding suffix SR for narrow slot, G for Gray, W for White, BL for Blue, B for Black.

Example: GR5050SRG" narrow slot gray duct.

*目录号必须添加后缀SR(窄槽), G(灰色), W(白色), BL(蓝色), B(黑色)。示例: GR5050SRG"窄槽灰色。



Ducting enables cabling to be introduced through the lateral perforations at the base of the ducting and used to fasten a sleeve from the bottom of the cabinet and the door or to clamp a cable coming from a distribution block, for example.
线槽下方孔洞, 在电缆穿过线槽时可用扎带固定, 使线缆不易脱落, 槽体更整洁。