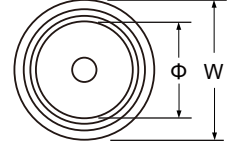
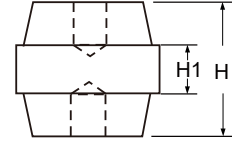


## CE RoHS EASCO® Bus Bar Insulators U Series (U型绝缘子)



Materials: BMC (Bough Moulding Compound) SMC (Sheet Moulding Compound).  
 Insert Material: Brass, Iron.  
 Working Temperature: -40°C ~ +140°C  
 Remark: Special color, insert, material is upon request by client with reasonable quantities.

材质: 不饱和聚酯树玻璃纤维增强模压塑料(BMC)(SMC).  
 嵌件: 黄铜、铁  
 工作温度: -40°C~+140°C  
 备注: 颜色、嵌件、材料性能可依客户需求定制, 但有起订量要求。



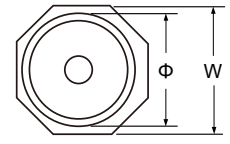
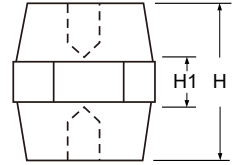
Article No.	Part No.	Tensile Strength (LBS)	Anti-Proof (KV)	Torgue Strength (FT LBS)	Screw	Screw Depth	H	H1	Φ	W	Material	Color
货号	型号	伸缩强度 (LBS)	耐压 (KV)	扭矩 (FT LBS)	螺纹	螺纹深度					材料	颜色
A0114.000.0001	U4535S	650	6	12	10	12	35		35	45	BMC	Red 红色
A0114.000.0002	U4535	700	6	12	10	12	35	13	35	45	BMC	
A0114.000.0003	U4538	800	8	12	10	12	36	16	29	45	BMC	
A0114.000.0004	U5258	1000	10	30	10	15	58	25	34	52	BMC	
A0114.000.0005	U6367	1000	12	40	10	15	67	10	37	63	BMC	

## CE RoHS EASCO® Bus Bar Insulators TSM Series (TSM型绝缘子)



Materials: BMC (Bough Moulding Compound) SMC (Sheet Moulding Compound).  
 Insert Material: Brass, Iron.  
 Working Temperature: -40°C ~ +140°C  
 Remark: Special color, insert, material is upon request by client with reasonable quantities.

材质: 不饱和聚酯树玻璃纤维增强模压塑料(BMC)(SMC).  
 嵌件: 黄铜、铁  
 工作温度: -40°C~+140°C  
 备注: 颜色、嵌件、材料性能可依客户需求定制, 但有起订量要求。



Article No.	Part No.	Tensile Strength (LBS)	Anti-Proof (KV)	Torgue Strength (FT LBS)	Screw	Screw Depth	H	H1	Φ	W	Material	Color
货号	型号	伸缩强度 (LBS)	耐压 (KV)	扭矩 (FT LBS)	螺纹	螺纹深度					材料	颜色
A0114.001.0001	TSM-20	300	4	4	5	7	20	6	12	15	BMC	Red 红色
A0114.001.0002	TSM-30	500	8	8	6	10	30	7	26	30	BMC	
A0114.001.0003	TSM-402	550	8	10	6	13	40	8	24	30	BMC	
A0114.001.0004	TSM-401	700	8	20	8	13	40	7	34	40	BMC	
A0114.001.0005	TSM-40	1000	8	30	10	14	40	8	41	50	BMC	
A0114.001.0006	TSM-50	1500	15	40	10	17	50	10	44	55	BMC	
A0114.001.0007	TSM-55	2000	15	50	10	17	50	10	40	60	BMC	
A0114.001.0008	TSM-70	1500	25	40	10	17	70	10	39	50	BMC	

A1. Wiring Ducts

A2. Cable Ties

A3. Din Rails

A4. Cable Markers

A5. Cable Clamps

A6. Wrapping Bands

A7. Nylon Cable Gland

A8. Metal Cable Gland

A9. Plastic Flexible Conduit

A10. Metal Flexible Conduit

A11. Terminal

A12. Copper Tube Terminals

A13. Heat Shrinkable Tubings

A14. Bus Bar Insulators

A15. Tool

A16. Cable Clip

A17. Insulating Nut

A18. Nylon Cable Carrier