

A1. Wiring Ducts

A2. Cable Ties

A3. Din Rails

A4. Cable Markers

A5. Cable Clamps

A6. Wrapping Bands

A7. Nylon Cable Gland

A8. Metal Cable Gland

A9. Plastic Flexible Conduit

A10. Metal Flexible Conduit

A11. Terminal

A12. Copper Tube Terminals

A13. Heat Shrinkable Tubings

A14. Bus Bar Insulators

A15. Tool

A16. Cable Clip

A17. Insulating Nut

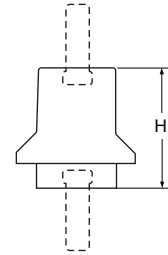
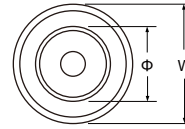
A18. Nylon Cable Carrier

## CE RoHS EASCO® Bus Bar Insulators S Series (S型绝缘子)



Materials: BMC (Bough Moulding Compound) SMC (Sheet Moulding Compound).  
 Insert Material: Brass, Iron.  
 Working Temperature: -40°C ~ +140°C  
 Remark: Special color, insert, material is upon request by client with reasonable quantities.

材质: 不饱和聚酯树脂玻璃纤维增强模压塑料(BMC)(SMC).  
 嵌件: 黄铜、铁  
 工作温度: -40°C~+140°C  
 备注: 颜色、嵌件、材料性能可依客户需求定制, 但有起订量要求。



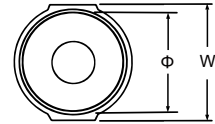
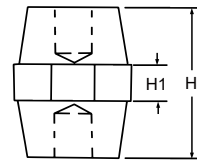
Article No.	Part No.	Tensile Strength (LBS)	Anti-Proof (KV)	Torgue Strength (FT LBS)	Screw	Screw Depth	H	H1	Φ	W	Material	Color
货号	型号	伸缩强度 (LBS)	耐压 (KV)	扭矩 (FT LBS)	螺纹	螺纹深度					材料	颜色
A0114.002.0001	S525-1	400	5	6	5	7	25		16	26	BMC	Red,White, Brown,Blue 红色, 白色 棕色, 蓝色
A0114.002.0002	S525-2	400	5	6	5	10	25		16	26	BMC	
A0114.002.0003	S525-3	400	5	6	5	13	25		16	26	BMC	
A0114.002.0004	S842-1	700	8	10	8	13	42		25	45	BMC	
A0114.002.0005	S842-2	700	8	10	8	14	42		25	45	BMC	
A0114.002.0006	S842-3	700	8	10	8	17	42		25	45	BMC	

## CE RoHS EASCO® Bus Bar Insulators SM Series (SM型绝缘子)



Materials: BMC (Bough Moulding Compound) SMC (Sheet Moulding Compound).  
 Insert Material: Brass, Iron.  
 Working Temperature: -40°C ~ +140°C  
 Remark: Special color, insert, material is upon request by client with reasonable quantities.

材质: 不饱和聚酯树脂玻璃纤维增强模压塑料(BMC)(SMC).  
 嵌件: 黄铜、铁  
 工作温度: -40°C~+140°C  
 备注: 颜色、嵌件、材料性能可依客户需求定制, 但有起订量要求。



Article No.	Part No.	Tensile Strength (LBS)	Anti-Proof (KV)	Torgue Strength (FT LBS)	Screw	Screw Depth	H	H1	Φ	W	Material	Color
货号	型号	伸缩强度 (LBS)	耐压 (KV)	扭矩 (FT LBS)	螺纹	螺纹深度					材料	颜色
A0114.003.0001	SM-20	300	5	4	5	7	20	5	15	17	BMC	Red 红色
A0114.003.0002	SM-25S	400	6	5	6	8	25	6	15	19	BMC	
A0114.003.0003	SM-25	500	6	6	6	9	25	10	23	30	BMC	
A0114.003.0004	SM-30	550	8	8	8	11	30	10	27	32	BMC	
A0114.003.0005	SM-35	600	10	10	8	11	35	10	28	32	BMC	
A0114.003.0006	SM-40	650	12	12	8	11	40	10	33	40	BMC	
A0114.003.0007	SM-45	1000	14	20	8	11	45	10	30	36	BMC	
A0114.003.0008	SM-51	1000	15	20	8	14	51	12	29	36	BMC	
A0114.003.0009	SM-60	1200	20	35	10	15	13	60	34	46	BMC	
A0114.003.0010	SM-76	1500	25	40	10	20	15.5	76	35	50	BMC	