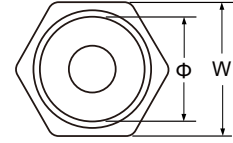
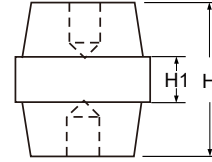


CE RoHS EASCO® Bus Bar Insulators SEP Series (SEP型绝缘子)



Materials: BMC (Bough Moulding Compound) SMC (Sheet Moulding Compound).
 Insert Material: Brass, Iron.
 Working Temperature: -40°C ~ +140°C
 Remark: Special color, insert, material is upon request by client with reasonable quantities.

材质: 不饱和聚酯树脂玻璃纤维增强模压塑料(BMC)(SMC).
 嵌件: 黄铜、铁
 工作温度: -40°C~+140°C
 备注: 颜色、嵌件、材料性能可依客户需求定制, 但有起订量要求。



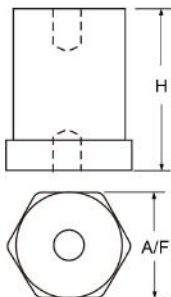
Article No.	Part No.	Tensile Strength (LBS)	Anti-Proof (KV)	Torgue Strength (FT LBS)	Screw	Screw Depth	H	H1	Φ	W	Material	Color
货号	型号	伸缩强度 (LBS)	耐压 (KV)	扭矩 (FT LBS)	螺纹	螺纹深度					材料	颜色
A0114.004.0001	SEP1615	300	4	3,3	4,5	4,4	16	4	12	15	BMC	Red 红色
A0114.004.0002	SEP2019	400	7	3,6,10	4,5,6	6,6,6	20	5	16	19	BMC	
A0114.004.0003	SEP2519	400	8.5	6,8	5,6	6,6	25	5	15	19	BMC	
A0114.004.0004	SEP2522	500	8.5	3,6,10	4,5,6	7,7,7	25	6	18	22	BMC	
A0114.004.0005	SEP2525	550	8.5	10	8	9	25	8	21	25	BMC	
A0114.004.0006	SEP3030	600	11	10,20,20	6,8,10	9,9,9	30	7	25	30	BMC	
A0114.004.0007	SEP3040	700	11	30,40	8,10	9,9	30	8	33.5	40	BMC	
A0114.004.0008	SEP3532	650	12.5	10,25,40	6,8,10	9,10,10	35	10	28.5	32	BMC	
A0114.004.0009	SEP3540	700	12.5	25,50	8,10	10,10	35	10	33	40	BMC	
A0114.004.0010	SEP3541	700	12.5	10,25,50	6,8,10	9,10,10	35	10	35	41	BMC	
A0114.004.0011	SEP4041	800	14	25,50,85	8,10,12	10,10,10	40	12	34	41	BMC	
A0114.004.0012	SEP4046	1000	14	25,50,85	8,10,12	10,10,12	40	12	40	46	BMC	
A0114.004.0013	SEP4546	1000	15.5	25,50,85	8,10,12	15,15,15	45	13	39.5	46	BMC	
A0114.004.0014	SEP5036	900	15.5	10,25,50	6,8,10	15,15,15	50	12	29	36	BMC	
A0114.004.0015	SEP5046	1100	15.5	50	10	15	50	10	37	46	BMC	
A0114.004.0016	SEP5050	1500	15.5	25,50,85	8,10,12	15,15,15	50	15	45	50	BMC	
A0114.004.0017	SEP6060	2000	21	25,50,85	8,10,12	15,15,20	60	15	49.5	60	BMC	
A0114.004.0018	SEP6541	1000	22	25,50,85	8,10,12	15,20,20	65	12	32	41	BMC	
A0114.004.0019	SEP7060	2000	25	25,50,85	10,12,16	20,20,25	70	14	52	60	BMC	
A0114.004.0020	SEP7550	1500	28	25,50,85	8,10,12	15,15,20	75	16	38.5	50	BMC	

CE RoHS EASCO® Bus Bar Insulators SB Series (SB型绝缘子)



Materials: BMC (Bough Moulding Compound) SMC (Sheet Moulding Compound).
 Insert Material: Brass, Iron.
 Working Temperature: -40°C ~ +140°C
 Remark: Special color, insert, material is upon request by client with reasonable quantities.

材质: 不饱和聚酯树脂玻璃纤维增强模压塑料(BMC)(SMC).
 嵌件: 黄铜、铁
 工作温度: -40°C~+140°C
 备注: 颜色、嵌件、材料性能可依客户需求定制, 但有起订量要求。



Article No.	Part No.	A/F	H	Torgue Strength (FT LBS)	Screw	Material	Color
货号	型号			扭矩 (FT LBS)	螺纹	材料	颜色
A0114.005.0001	SB20	20	20,25,30,40,50,50	5	5,6	BMC	Red 红色
A0114.005.0002	SB30	30	30,35,40,50,60,65	10	6,8	BMC	
A0114.005.0003	SB35	35	45,45,45,45,45,45	35	10,10	BMC	
A0114.005.0004	SB40	40	30,35,40,50,60,70	16	8,10	BMC	
A0114.005.0005	SB60	60	40,50,60,70,80,80	50	12,16	BMC	