

A1. Wiring Ducts

A2. Cable Ties

A3. Din Rails

A4. Cable Markers

A5. Cable Clamps

A6. Wrapping Bands

A7. Nylon Cable Gland

A8. Metal Cable Gland

A9. Plastic Flexible Conduit

A10. Metal Flexible Conduit

A11. Terminal

A12. Copper Tube Terminals

A13. Heat Shrinkable Tubings

A14. Bus Bar Insulators

A15. Tool

A16. Cable Clip

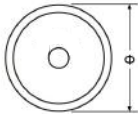
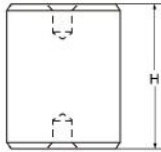
A17. Insulating Nut

A18. Nylon Cable Carrier

CE RoHS EASCO® Bus Bar Insulators MNS Series (MNS型绝缘子)



Materials: BMC (Bough Moulding Compound) SMC (Sheet Moulding Compound).
 Insert Material: Brass, Iron.
 Working Temperature: -40°C ~ +140°C
 Remark: Special color, insert, material is upon request by client with reasonable quantities.
 材质: 不饱和聚酯树脂玻璃纤维增强模压塑料(BMC)(SMC).
 嵌件: 黄铜、铁
 工作温度: -40°C~+140°C
 备注: 颜色、嵌件、材料性能可依客户需求定制, 但有起订量要求。



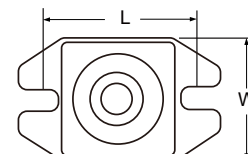
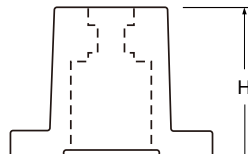
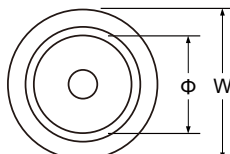
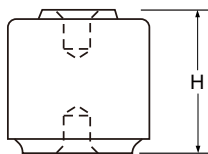
| Article No. | Part No. | Φ | H | Torgue Strength (FT LBS) | Screw | Material | Color |
|----------------|------------|-----|------------------|--------------------------|-------|----------|-----------|
| 货号 | 型号 | | | 扭矩 (FT LBS) | 螺纹 | 材料 | 颜色 |
| A0114.006.0001 | MNS16xH.D. | Φ16 | 20,25,30,35,40 | M6 | 8 | BMC | Red 红色 |
| A0114.006.0002 | MNS25xH.D. | Φ25 | 25,30,40,50 | M6 | 9 | BMC | |
| A0114.006.0003 | MNS30xH.D. | Φ30 | 30,40,50,60 | M8 | 9 | BMC | |
| A0114.006.0004 | MNS40xH.D. | Φ40 | 40,50,60,70,80 | M8,M10 | 12 | BMC | |
| A0114.006.0005 | MNS50xH.D. | Φ50 | 50,60,70,80 | M8,M10 | 15 | BMC | |
| A0114.006.0006 | MNS60xH.D. | Φ60 | 40,50,60 | M10,M12 | 15 | BMC | |
| A0114.006.0007 | MNS70xH.D. | Φ70 | 70,80,90,100,110 | M14,M16 | 18,22 | BMC | |

CE RoHS EASCO® Bus Bar Insulators ID Series (ID型绝缘子)



Materials: BMC (Bough Moulding Compound) SMC (Sheet Moulding Compound).
 Insert Material: Brass, Iron.
 Working Temperature: -40°C ~ +140°C
 Remark: Special color, insert, material is upon request by client with reasonable quantities.
 材质: 不饱和聚酯树脂玻璃纤维增强模压塑料(BMC)(SMC).
 嵌件: 黄铜、铁
 工作温度: -40°C~+140°C
 备注: 颜色、嵌件、材料性能可依客户需求定制, 但有起订量要求。

| Article No. | Part No. | Tensile Strength (LBS) | Anti-Proof (KV) | Torgue Strength (FT LBS) | Screw | Screw Depth | H | L | Φ | W | Material | Color |
|----------------|----------|------------------------|-----------------|--------------------------|-------|-------------|----|----|------|----|----------|-------------|
| 货号 | 型号 | 伸缩强度 (LBS) | 耐压 (KV) | 扭矩 (FT LBS) | 螺纹 | 螺纹深度 | | | | | 材料 | 颜色 |
| A0114.007.0001 | Φ30x30 | 500 | 5 | 8 | 6 | 10 | 30 | | 18 | 30 | BMC | Black 黑色 |
| A0114.007.0002 | Φ30x40 | 500 | 6 | 10 | 6 | 12 | 40 | | 18 | 30 | BMC | |
| A0114.007.0003 | Φ40x40 | 650 | 10 | 12 | 8 | 13 | 40 | | 26 | 40 | BMC | |
| A0114.007.0004 | Φ30x60 | 650 | 15 | 40 | 10 | 15 | 60 | | 26 | 40 | BMC | |
| A0114.007.0005 | Φ50x40 | 1000 | 10 | 50 | 10 | 13 | 40 | | 31.5 | 50 | BMC | |
| A0114.007.0006 | CJ50 | 500 | 8 | 20 | 10 | | 50 | 50 | | 40 | BMC | |



Φ30x30, Φ30x40, Φ40x40, Φ30x60, Φ50x40

CJ50