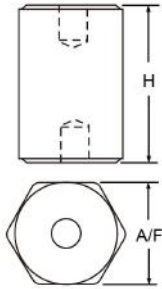


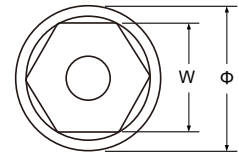
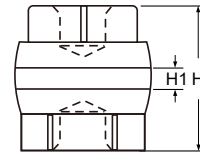
CE RoHS EASCO® Bus Bar Insulators EN Series (EN型绝缘子)



Materials: BMC (Bough Moulding Compound) SMC (Sheet Moulding Compound).
 Insert Material: Brass, Iron.
 Working Temperature: -40°C ~ +140°C
 Remark: Special color, insert, material is upon request by client with reasonable quantities.
 材质: 不饱和聚酯树脂玻璃纤维增强模压塑料(BMC)(SMC).
 嵌件: 黄铜、铁
 工作温度: -40°C~+140°C
 备注: 颜色、嵌件、材料性能可依客户需求定制, 但有起订量要求。

Article No.	Part No.	A/F	H	Torgue Strength (FT LBS)	Screw	Screw Depth	Material	Color
货号	型号			扭矩 (FT LBS)	螺纹	螺纹深度	材料	颜色
A0114.008.0001	EN25	26	25	10	6	9	BMC	Red 红色
A0114.008.0002	EN30	26	30	10	6	9	BMC	
A0114.008.0003	EN32	26	32	10	6	9	BMC	
A0114.008.0004	EN40	26	40	10	6	9	BMC	
A0114.008.0005	EN100	45	100	25,40	10,12	15,18	BMC	
A0114.008.0006	EN110	45	110	25,40	10,12	15,18	BMC	
A0114.008.0007	EN120	45	120	25,40	10,12	15,18	BMC	

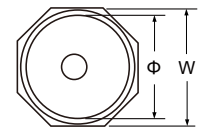
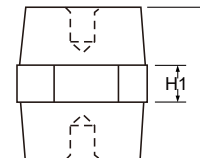
CE RoHS EASCO® Bus Bar Insulators D Series (D型绝缘子)



Materials: BMC (Bough Moulding Compound) SMC (Sheet Moulding Compound).
 Insert Material: Brass, Iron.
 Working Temperature: -40°C ~ +140°C
 Remark: Special color, insert, material is upon request by client with reasonable quantities.
 材质: 不饱和聚酯树脂玻璃纤维增强模压塑料(BMC)(SMC).
 嵌件: 黄铜、铁
 工作温度: -40°C~+140°C
 备注: 颜色、嵌件、材料性能可依客户需求定制, 但有起订量要求。

Article No.	Part No.	Tensile Strength (LBS)	Anti-Proof (KV)	Torgue Strength (FT LBS)	Screw	Screw Depth	H	H1	Φ	W	Material	Color
货号	型号	伸缩强度 (LBS)	耐压 (KV)	扭矩 (FT LBS)	螺纹	螺纹深度					材料	颜色
A0114.009.0001	D2525	500	5	20	8	9	25	5	25	20	BMC	Red,Black 红色, 黑色
A0114.009.0002	D3030	700	6	30	8	10	30	4	30	24	BMC	
A0114.009.0003	D5040	100	10	50	10	15	50	10	40	32	BMC	
A0114.009.0004	D6060	2000	12	80	10	18	60	12	60	50	BMC	

CE RoHS EASCO® Bus Bar Insulators 71 Series (71型绝缘子)



Materials: BMC (Bough Moulding Compound) SMC (Sheet Moulding Compound).
 Insert Material: Brass, Iron.
 Working Temperature: -40°C ~ +140°C
 Remark: Special color, insert, material is upon request by client with reasonable quantities.
 材质: 不饱和聚酯树脂玻璃纤维增强模压塑料(BMC)(SMC).
 嵌件: 黄铜、铁
 工作温度: -40°C~+140°C
 备注: 颜色、嵌件、材料性能可依客户需求定制, 但有起订量要求。

Article No.	Part No.	Tensile Strength (LBS)	Anti-Proof (KV)	Torgue Strength (FT LBS)	Screw	Screw Depth	H	H1	Φ	W	Material	Color
货号	型号	伸缩强度 (LBS)	耐压 (KV)	扭矩 (FT LBS)	螺纹	螺纹深度					材料	颜色
A0114.011.0001	7100	500	6	6	6	9	30	7	26	30	BMC	Red 红色
A0114.011.0002	7105	650	8	8	6	10	38	10	27	33	BMC	
A0114.011.0003	7110	800	10	10	8	12	45	10	32	40	BMC	
A0114.011.0004	7120	1200	15	12,35	8,10	12,15	52	12	42	52	BMC	
A0114.011.0005	7125	1500	20	40	10	18	62	12	44	55	BMC	

- A1. Wiring Ducts
- A2. Cable Ties
- A3. Din Rails
- A4. Cable Markers
- A5. Cable Clamps
- A6. Wrapping Bands
- A7. Nylon Cable Gland
- A8. Metal Cable Gland
- A9. Plastic Flexible Conduit
- A10. Metal Flexible Conduit
- A11. Terminal
- A12. Copper Tube Terminals
- A13. Heat Shrinkable Tubings
- A14. Bus Bar Insulators
- A15. Tool
- A16. Cable Clip
- A17. Insulating Nut
- A18. Nylon Cable Carrier