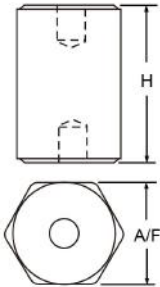


CE RoHS EASCO Bus Bar Insulators EN Series (& /6 }_}š=©)



Materials: BMC (Bough Moulding Compound) SMC (Sheet Moulding Compound)
 Insert Material: Brass, Iron.
 Working Temperature: -40 °C ~ +140 °C
 Remark: Special color, insert, material is upon request by client with reasonable quantities.
 Rp™ &v@Ö1\$•ø ¼T h'io)&jv7PE W-/7UOñ #. \$ 4. \$ o
 Az'Yo,\$\$ §
 B'(r^CPö; ë _ ë
 8Š'äö;,,€ Az'Y RPOñF•J03(Ü>PJ*a=[>A-Væ(NRc™p-çj€³[o

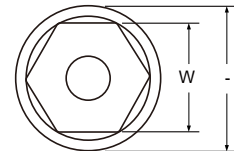
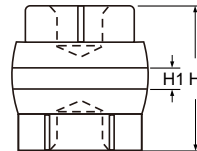


Article No.	Part No.	A/F	H	Torgue Strength (FT LBS)	Screw	Screw Depth	Material	Color
] #p	'r#p			2TGD (FT LBS)	WjN	WjN =Ø.°	775€	hfRY
A0114.008.0001	EN25	26	25	10	6	9	BMC	Red N%oRY
A0114.008.0002	EN30	26	30	10	6	9	BMC	
A0114.008.0003	EN32	26	32	10	6	9	BMC	
A0114.008.0004	EN40	26	40	10	6	9	BMC	
A0114.008.0005	EN100	45	100	25,40	10,12	15,18	BMC	
A0114.008.0006	EN110	45	110	25,40	10,12	15,18	BMC	
A0114.008.0007	EN120	45	120	25,40	10,12	15,18	BMC	

CE RoHS EASCO Bus Bar Insulators D Series (%6 }_}š=©)



Materials: BMC (Bough Moulding Compound) SMC (Sheet Moulding Compound)
 Insert Material: Brass, Iron.
 Working Temperature: -40 °C ~ +140 °C
 Remark: Special color, insert, material is upon request by client with reasonable quantities.
 Rp™ &v@Ö1\$•ø ¼T h'io)&jv7PE W-/7UOñ #. \$ 4. \$ o
 Az'Yo,\$\$ §
 B'(r^CPö; ë _ ë
 8Š'äö;,,€ Az'Y RPOñF•J03(Ü>PJ*a=[>A-Væ(NRc™p-çj€³[o

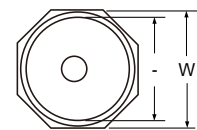
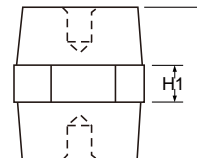


Article No.	Part No.	Tensile Strength (LBS)	Anti-Pr oof (KV)	Torgue Strength (FT LBS)	Screw	Screw Depth	H	H1	...	W	Material	Color
] #p	'r#p	O /!• (LBS)	O÷#r(KV)	2TGD (FT LBS)	WjN	WjN =Ø.°					775€	hfRY
A0114.009.0001	D2525	500	5	20	8	9	25	5	25	20	BMC	Red,Black N%oR Y nRY
A0114.009.0002	D3030	700	6	30	8	10	30	4	30	24	BMC	
A0114.009.0003	D5040	100	10	50	10	15	50	10	40	32	BMC	
A0114.009.0004	D6060	2000	12	80	10	18	60	12	60	50	BMC	

CE RoHS EASCO Bus Bar Insulators 71 Series (6 }_}š=©)



Materials: BMC (Bough Moulding Compound) SMC (Sheet Moulding Compound)
 Insert Material: Brass, Iron.
 Working Temperature: -40 °C ~ +140 °C
 Remark: Special color, insert, material is upon request by client with reasonable quantities.
 Rp™ &v@Ö1\$•ø ¼T h'io)&jv7PE W-/7UOñ #. \$ 4. \$ o
 Az'Yo,\$\$ §
 B'(r^CPö; ë _ ë
 8Š'äö;,,€ Az'Y RPOñF•J03(Ü>PJ*a=[>A-Væ(NRc™p-çj€³[o



Article No.	Part No.	Tensile Strength (LBS)	Anti-Pr oof (KV)	Torgue Strength (FT LBS)	Screw	Screw Depth	H	H1	...	W	Material	Color
] #p	'r#p	O /!• (LBS)	O÷#r(KV)	2TGD (FT LBS)	WjN	WjN =Ø.°					775€	hfRY
A0114.011.0001	7100	500	6	6	6	9	30	7	26	30	BMC	Red N%oRY
A0114.011.0002	7105	650	8	8	6	10	38	10	27	33	BMC	
A0114.011.0003	7110	800	10	10	8	12	45	10	32	40	BMC	
A0114.011.0004	7120	1200	15	12,35	8,10	12,15	52	12	42	52	BMC	
A0114.011.0005	7125	1500	20	40	10	18	62	12	44	55	BMC	

- A1. Wiring Ducts
- A2. Cable Ties
- A3. Din Rails
- A4. Cable Markers
- A5. Cable Clamps
- A6. Wrapping Bands
- A7. Nylon Cable Gland
- A8. Metal Cable Gland
- A9. Plastic Flexible Conduit
- A10. Metal Flexible Conduit
- A11. Terminal
- A12. Copper Tube Terminals
- A13. Heat Shrinkable Tubings
- A14. Bus Bar Insulators
- A15. Tool
- A16. Cable Clip
- A17. Insulating Nut
- A18. Nylon Cable Carrier